



# SHANELA



Environmental Management (Pty) Ltd  
Telefax 031 7018030 Mobile 083 303 4697  
email: [shanela@mweb.co.za](mailto:shanela@mweb.co.za) / Website: [www.shanela.co.za](http://www.shanela.co.za)

---

## URBAN IMPROVEMENT PRECINCT COMPANY

### **SOUTH BEACH U.I.P. REPORT**



**June 2016**

---

---

**STATISTICS**

Bags collected for June 2016	<b>6 005</b>	Bags
Average weight for period @ 5.5kg /bag	33 028	Kilograms
Bags collected for same period in 2015	5 820	Bags
Weight average for same period in 2015	32 010	Kilograms
Variance on bags for period 2015	185	
Percentage Variance	3	%
Average Bags collected per day in June 2016	200	Bags per day
Average weight per day in June 2016	1 100	Kilograms
Average cost of bags for period	R 4 503.75	Rands
Actual Bags collected for 2016 YTD	39 003	Bags
Bag Cost Year to Date	R 29 252.25	Rands
Average weight collection YTD	214 517	Kilograms
Percentage of projection YTD	49	%
Projection of Bags for 2016 total	84 000	Bags
Projection of average weight for 2016	462 000	Kilograms
Projected cost of bags for year 2016	65 560.00	Rands

---

---

**SUMMARY - YEAR TO DATE 2016**

<b>MONTH</b>	<b>BAGS</b>	<b>KG</b>	<b>BAGS/DAY</b>
January	6 850	37 675	221
February	6 600	36 300	228
March	6 680	36 740	215
April	6 753	37 142	218
May	6 115	33 633	197
June	6 005	33 028	200
July	-	-	-
August	-	-	-
September	-	-	-
October	-	-	-
November	-	-	-
December	-	-	-
<b>Totals</b>	<b>39 003</b>	<b>214 517</b>	<b>221</b>

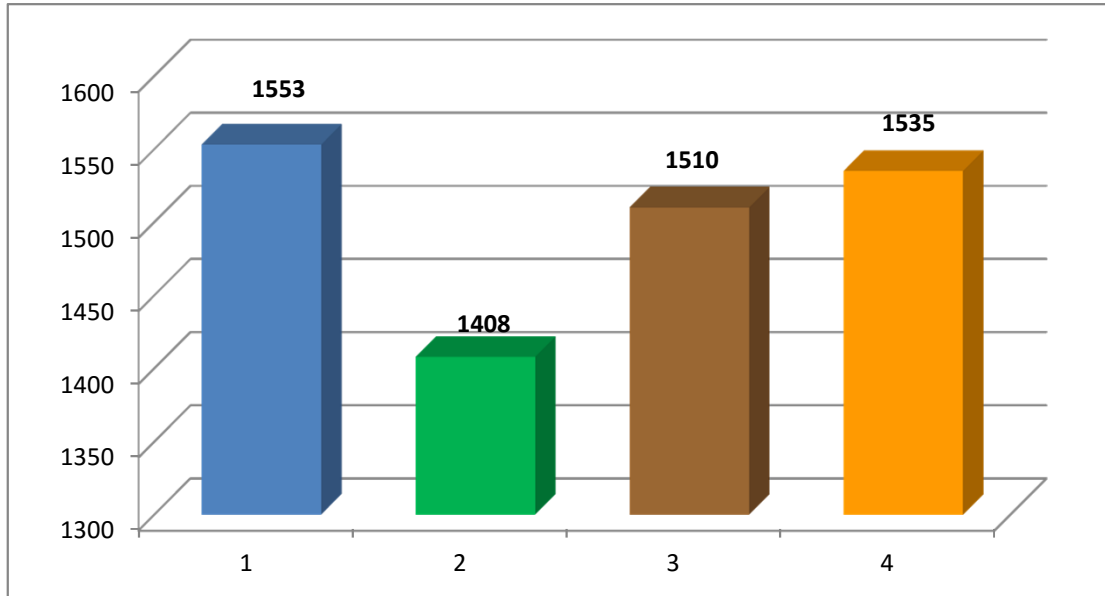
---

---

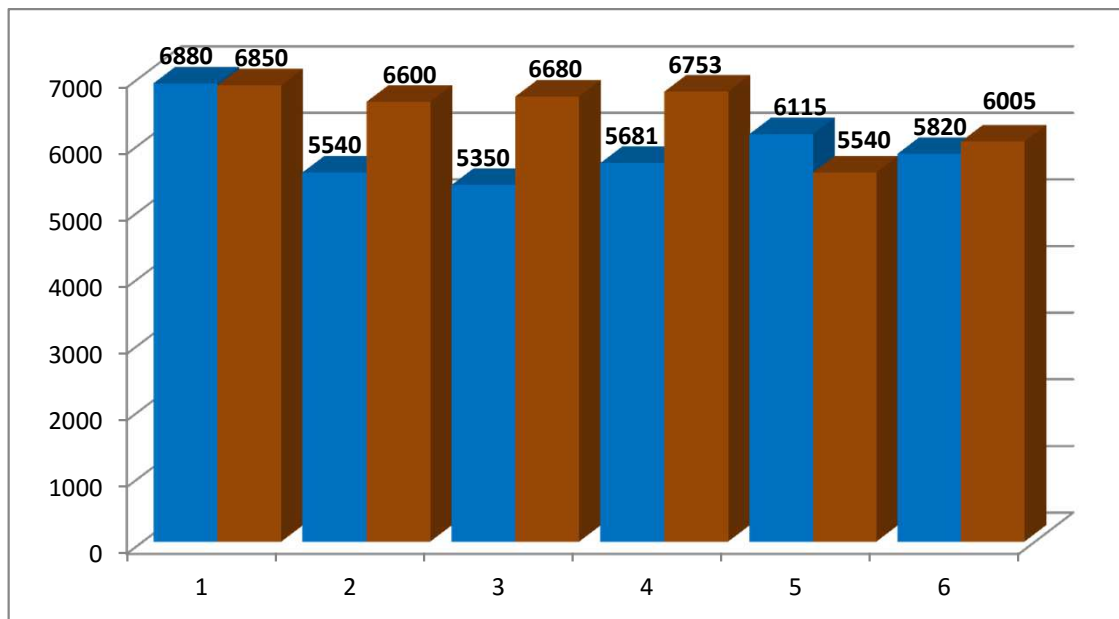
## STREET LIGHTS

Ongoing

BAG USAGE APRIL 2016



JAN - MAY 2016 COLLECTION STATS



2015

2016